



# R1100S

## MOBILE TRACK-MOUNTED IMPACT CRUSHER

Performance up to 420 st/h / 380 t/h\*

Transport weight 72,600 lbs / 32,9 t

Fully hydraulic 

## PRODUCT DESCRIPTION

EFFICIENT  
CRUSHING  
TECHNOLOGY



Rockster Austria International GmbH | Matzelsdorf 72, 4212 Neumarkt i.M., Austria  
Tel.: +43 720 70 1212 | office@rockster.at | www.rockster.at



**ROCKSTER**<sup>®</sup>

\*depending on material



# PRODUCT DESCRIPTION

# R1100S



## MOBILE TRACK-MOUNTED IMPACT CRUSHER

# R1100S



**HIGH & CONSTANT  
PERFORMANCE**



**INCREASED  
MOBILITY**



**EASE OF  
OPERATION**



**MAXIMUM  
FLEXIBILITY**



**HYDROSTATIC  
DRIVE**



**LONG-TERM  
RELIABILITY**



**CLIMATE  
FRIENDLY**

Rockster Austria International GmbH | Matzelsdorf 72, 4212 Neumarkt i.M., Austria  
Tel.: +43 720 70 1212 | office@rockster.at | www.rockster.at



# ROCKSTER®



# APPLICATION AREAS

**R1100S**



Perfect cubic final grain

**COMPACT. FLEXIBLE. POWERFUL.**

The mobile impact crusher R1100S is specially developed for applications where space is limited such as for inner-city projects. Because of its optimal dimensions, the R1100S is easily transported from one jobsite to another. It is the perfect combination of compactness and maximum performance.

Rockster's mobile track-mounted impact crusher is based on a fully hydraulically concept, which allows flexible recycling of asphalt, concrete and demolition debris.

Besides previously mentioned materials, the R1100S is also suitable for precise processing of natural stone.

## R1100S IS THE MOST COMPACT SOLUTION FOR RECYCLING & CRUSHING OF:

### CONCRETE



Recycled concrete blocks 0/16

### DEMOLITION DEBRIS



Subbase road 0/32

### ASPHALT



Road 0/32

### BRICK



Refilling pipelines 0/64

### VIRGIN STONE



Forest road 0/32



# MAIN DIMENSIONS

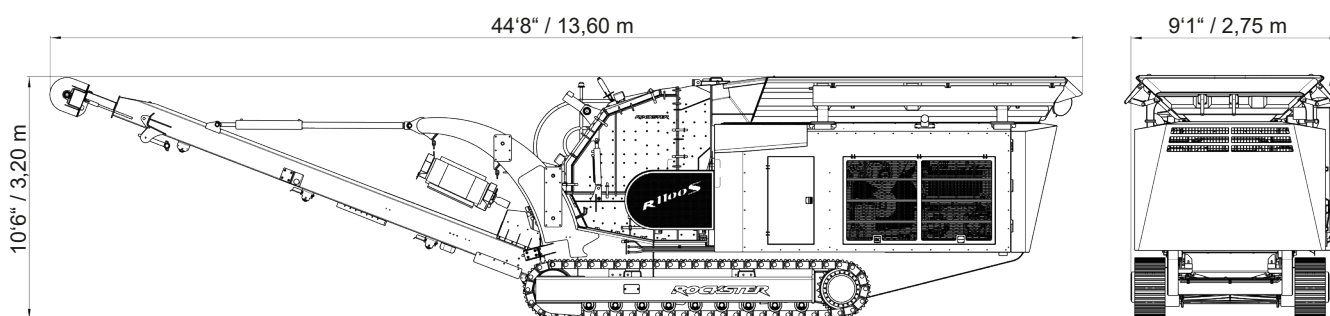
**R1100S**

## Transport dimensions

Length:	44'8" / 13,60 m
Width:	9'1" / 2,75 m
Height:	10'6" / 3,20 m
Weight:	72.600 lbs / 32,9 t

## Feeding & discharge height

Feeding height:	10'6" / 3,20 m
Main discharge belt:	~ 11'6" / 3,50 m
Side discharge belt:	~ 7'10" / 2,40 m



## TECHNICAL DETAILS

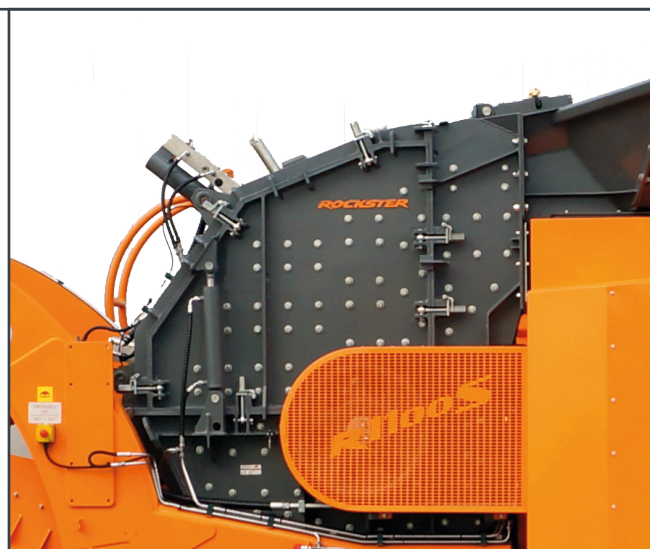
### MAXIMUM FLEXIBILITY

The Rockster impact crusher guarantees highest performance at a very high crushing ratio. Due to two hydraulically adjustable swing-beams, as well as the rotor speed variation, the final grain can be precisely defined. High quality blow bars can be used bilaterally too

and are chosen individually depending on the application. The blow bar exchange is possible through a built-on blow bar exchange device, therefore an external lifting device is not necessary. High quality wear materials ensure reduced wear.

### Impact crusher

Inlet opening:	44" x 29" / 1100 x 720 mm
Impact circle diameter:	40" / 1020 mm
Rotor equipment:	4 blow bars
Crushing ration:	1:10 - 1:50
Performance:	up to 440 st/h / 400 t/h
Rotor speed (continuously adjustable):	up to 850 rpm
Weight:	22,500 lbs / 10.200 kg
Drive:	hydrostatic
Gap adjustment (adjusted on display):	fully hydraulic
Dust suppression:	At the crusher inlet & outlet





## Drive unit

Engine (electronically regulated):	Volvo Stage IIIA - 262 kW / 350HP
	Volvo Stage IV - 265 kW / 355HP
	CAT Stage IIIA - 242 kW / 325 HP
	CAT Stage V - 280 kW / 375HP
Cylinder:	6
Cooling system:	water

The drive system is located at the rear of the machine, enclosed in a sound-proofed housing. Engine openings are positioned on all sides for easy access, service and overall maintenance.

The hydraulic pump for all auxiliary drives (main discharge belt, side discharge belt, vibration chute, crawler gear...) as well as the pump for the hydrostat are driven via a distributing gear unit which is flange-mounted on the drive engine. The hydrostat activates the crusher via a V-belt drive.



### ADVANTAGES OF THE HYDROSTATIC DRIVE

- > Elimination of conventional clutch. No wear.
- > Individual adjustment of crusher speed
- > Crusher overload protection
- > Power adjustment according to individual requirements
- > Uniform throughput
- > Enormous power reserves

## Feed hopper

Material:	Hardox 400
Volume:	6.5 yd <sup>3</sup> / 5 m <sup>3</sup>
Length:	14'6" / 4400 mm
Width:	8'2" / 2500 mm
Height:	10'6" / 3200 mm



## Vibration chute with 2-deck pre-screening

Material:	Hardox 450
Length:	5'11" / 1800 mm
Width:	3'7" / 1100 mm
Type:	Zig zag
Option:	bar screen
Drive:	hydraulic - with load-dependent speed control <b>Overload protection</b>



## Bypass

The switchable chute (Bypass) enables the discharge of pre-screened material on the side or onto the main discharge belt.

Easy switch via hand lever.

**No special assembly necessary.**  
**No wear. No service.**





## Main discharge belt

Belt width:	47" / 1200 mm
Discharge height:	~ 11'6" / 3,5 m
Angle:	25°
Drive:	hydraulic, continuously variable

The main discharge belt is hydraulically lowerable for maintenance and service purposes.



## Side discharge belt

Belt width:	26" / 650 mm
Discharge height:	~ 7'10" / 2,4 m
Angle:	20°
Drive:	hydraulic

The side discharge belt is hydraulically foldable for transport purposes.



## Magnetic separator

Type:	Permanent magnet
Belt width:	30" / 750 mm
Weight:	2570 lbs / 1165 kg
Drive:	hydraulic



## Caterpillar crawler

Tread width:	16" / 400 mm - slanted
Wheel base:	12'6" / 3800 mm
Surface:	triple ribbed pads
Drive:	2-speed hydraulic



## Control panel

Central control/operating unit ensures an easy operation and machine monitoring in connection with a wireless remote control.

**Fully automatic engine Start-Stop system with only one button.**

- > Save the operation settings for various applications
- > Error monitoring - error log
- > Input & output status
- > Fast start of operation (QUICKSTART-Funktion)





# ROCKSTER FEATURES

**R1100S**

## Environmentally friendly

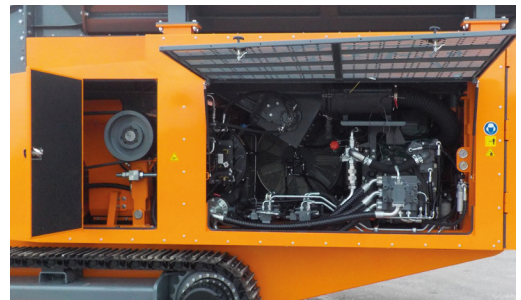
### Reduction of emissions through:

- > efficient dust suppression
- > sound-proofed housing
- > motor drive according to the latest technology standards



## Easy maintenance & ideal accessibility

Large covers enable optimal accessibility when it comes to service and maintenance. Furthermore they ensure optimal ventilation of the drive-unit and the cooler.



## OPTIONS



Water pump



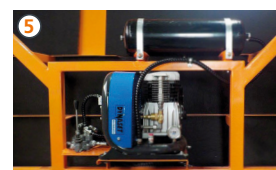
Sound insulation



Blow-bar exchange system



Main belt - wear protection



Air compressor



Belt scale  
incl. printer

# OPTION: SCREENING SYSTEM - SCREEN BOX RS114 + DOUBLE-FUNCTIONAL RETURN- OR STOCKPILE BELT RB95



## Defined final product in one workflow

The optional screening system consists of the compact circular vibrating screen RS114 in combination with the return belt RB95. The screening system is a perfect addition for the production of 100 % defined final grain.

The components are mounted directly onto the main discharge belt and are driven through the additional hydraulic system of the crusher.

In addition, the return belt can be used as a stockpile belt, which enables the production of the second product.



## Vibrating screen - lowerable

Screen size:	10'2" x 4'5" / 3100 x 1350 mm
Standard mesh:	1 1/2" / 38 mm

Special screens available on demand

The hydraulically lowerable screen box saves time and unnecessary costs during maintenance.



## Discharge conveyor - fines

Belt width:	3'11" / 1200 mm
Discharge height:	~ 9'11" / 3,0 m



## Discharge conveyor - oversize grain

Belt width:	24" / 600 mm
-------------	--------------



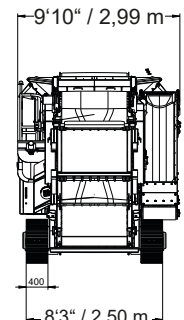
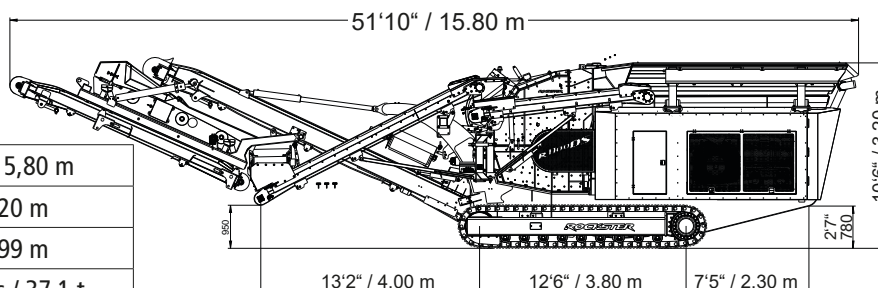
## RB95 return or stockpile belt

Belt width:	24" / 600 mm
Discharge height (main conveyor):	~ 12' / 3,6 m



## Transportabmessungen R1100S + RS114 + RB95

Length:	51'10" / 15,80 m
Height:	10'6" / 3,20 m
Width:	9'10" / 2,99 m
Weight:	81,800 lbs / 37,1 t

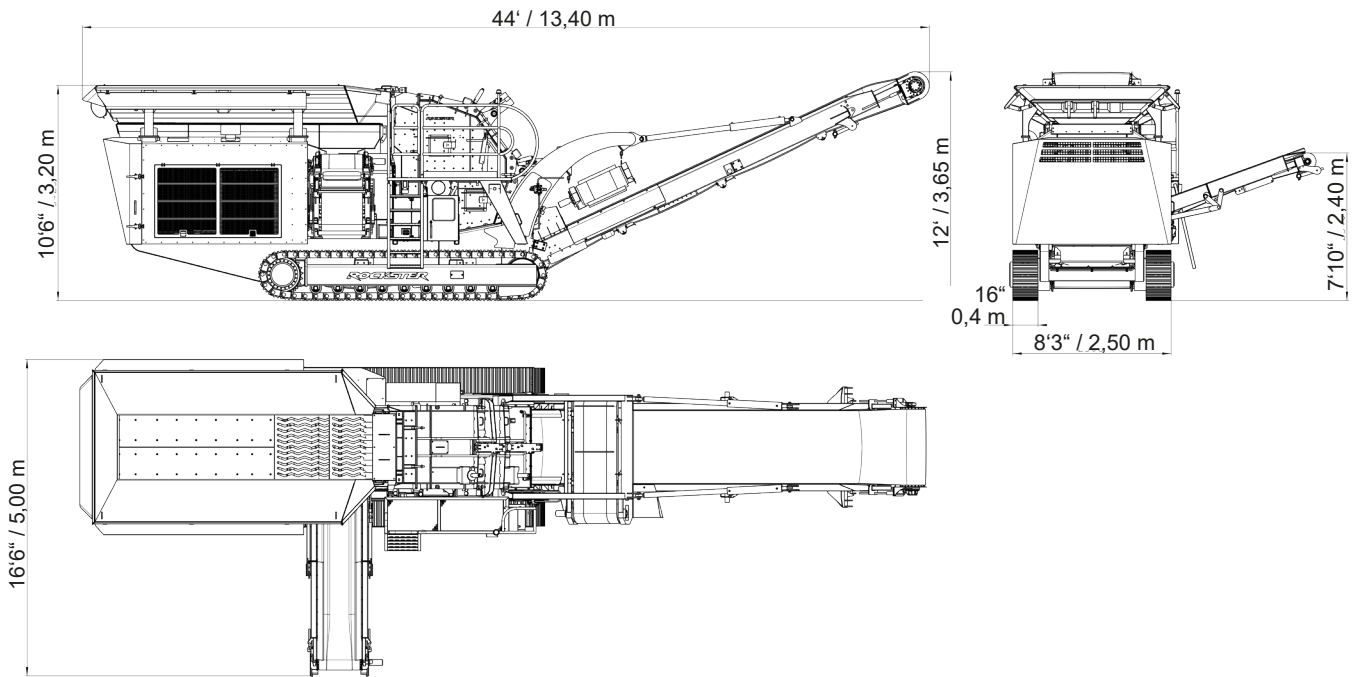




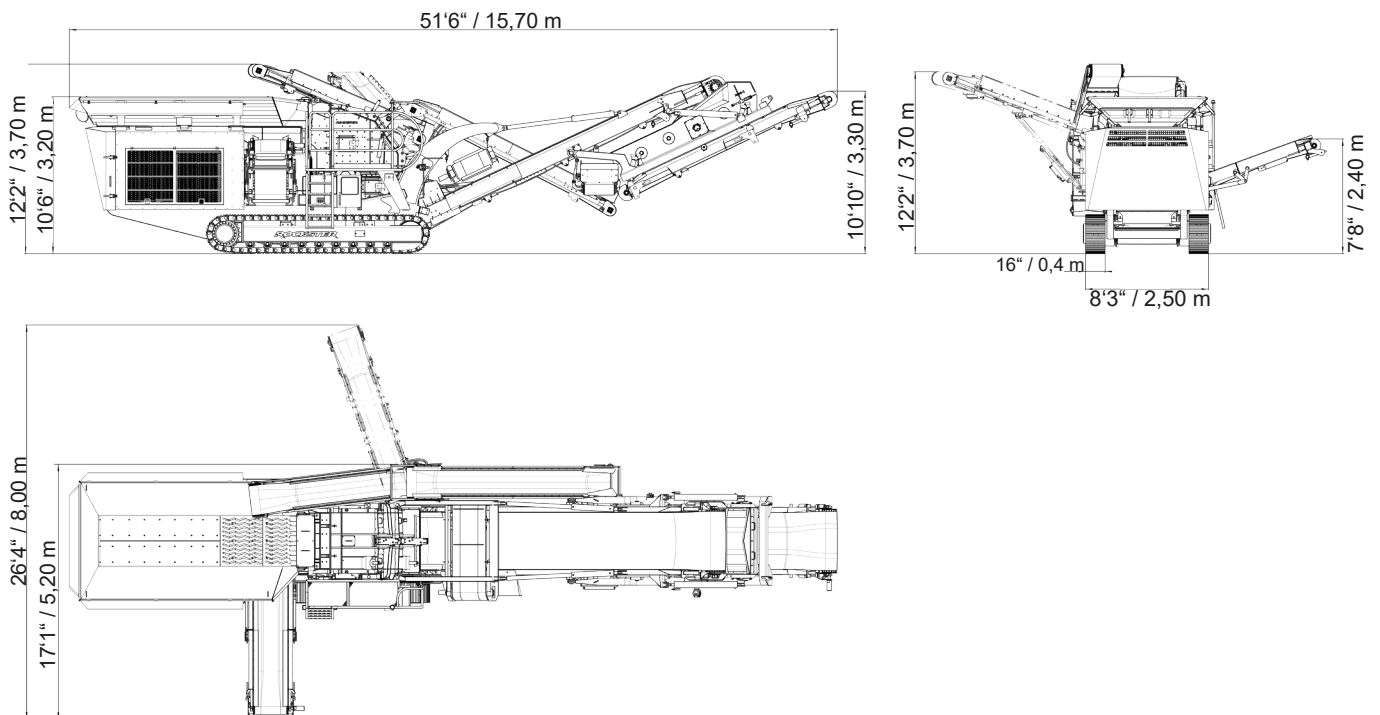
# WORKING DIMENSIONS

# R1100S

## R1100S



## R1100S with screening system





# CUSTOMER FEEDBACK

# R1100S



SCAN & WATCH



*„In 2016, we were looking for a reliable and powerful crusher because our demolition and recycling business has been growing fast. After testing a few machines from different manufacturers and checking Rockster references, we decided to purchase the R1100D. It was simply the right machine for our needs when it comes to crushing rubble, asphalt and limestone,“ says business owner Josef Mayrhofer.*

**Josef Mayrhofer, CEO**  
Mayrhofer Erdbewegungen, Austria

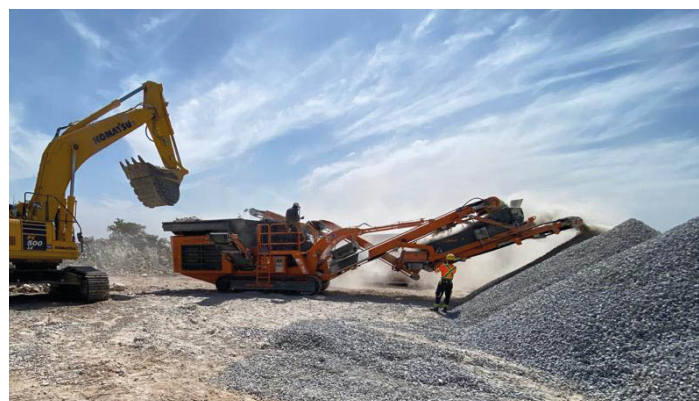


*„The handling of hydrostatic drive is simple and the output is remarkable“*

**Iurii Lisnichenko, CEO**  
CSB, Morocco



SCAN & WATCH



*„We are convinced in the robustness and longevity of these impact crushers and have therefore this time invested in a larger impactor, R1100S from Rockster“*

**Al Hassane Sienuou, CEO**  
Tropic Mining & Quarry, Burkina Faso



SCAN & READ



# GENERAL INFORMATION



<b>HIGH &amp; CONSTANT PERFORMANCE</b>	<b>INCREASED MOBILITY</b>	<b>EASE OF OPERATION</b>	<b>MAXIMUM FLEXIBILITY</b>	<b>HYDROSTATIC DRIVE</b>	<b>LONG-TERM RELIABILITY</b>	<b>CLIMATE FRIENDLY</b>

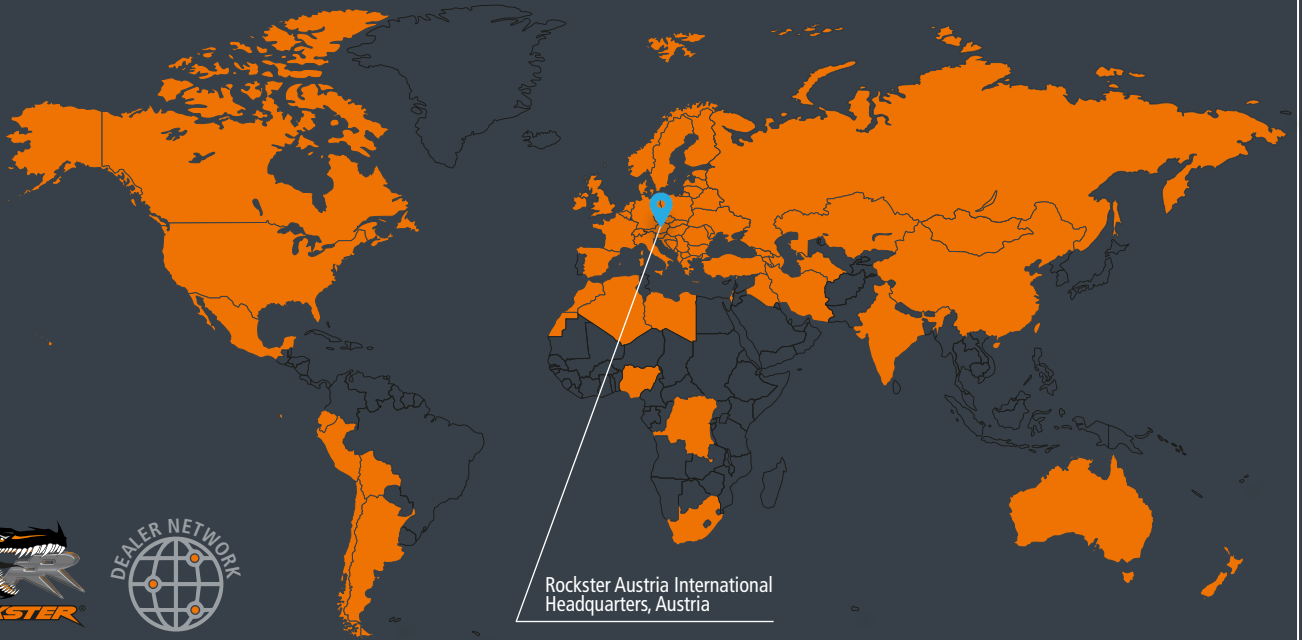
Austrian based manufacturer Rockster Austria International GmbH has a longstanding reputation and the know-how in demolition and screening industry.

The product line includes, among others, track mounted impact and jaw crushers, screening machinery and tracked stackers. "Our mobile crushers and screeners are used for profitable & economical recycling and processing of asphalt, concrete and construction waste, as well as for natural stone.

With innovations like The Original DUPLEX system or double-functional return belt, we repeatedly demonstrate our progressive approach towards improving and developing more efficient recycling & processing methods."

Rockster machines are sold in more than 50 countries worldwide. Our sales partner network guarantees the ideal on-site package of product and service in order to support and secure the daily success of our customers.





Rockster Austria International  
Headquarters, Austria

**SOLD IN MORE THAN 50 COUNTRIES WORLDWIDE**

**EFFICIENT  
CRUSHING TECHNOLOGIE**

Rockster Austria International GmbH | Matzelsdorf 72, 4212 Neumarkt i.M., Austria  
Tel.: +43 720 70 1212 | office@rockster.at | www.rockster.at

