



R900

MOBILE TRACK-MOUNTED IMPACT CRUSHER

Performance up to 270 st/h / 240 t/h*

Transport weight 56,300 lbs / 25,5 t

Fully hydraulic



PRODUCT DESCRIPTION

EFFICIENT
CRUSHING
TECHNOLOGY



Rockster Austria International GmbH | Matzelsdorf 72, 4212 Neumarkt i.M., Austria
Tel.: +43 720 70 1212 | office@rockster.at | www.rockster.at



ROCKSTER[®]

* depending on material

PRODUCT DESCRIPTION

R900



MOBILE TRACK-MOUNTED IMPACT CRUSHER

R900



**HIGH & CONSTANT
PERFORMANCE**



**INCREASED
MOBILITY**



**EASE OF
OPERATION**



**MAXIMUM
FLEXIBILITY**



**HYDROSTATIC
DRIVE**



**LONG-TERM
RELIABILITY**



**CLIMATE
FRIENDLY**

Rockster Austria International GmbH | Matzelsdorf 72, 4212 Neumarkt i.M., Austria
Tel.: +43 720 70 1212 | office@rockster.at | www.rockster.at



ROCKSTER®



Perfect cubic final grain

COMPACT. FLEXIBLE. POWERFUL.

Rising landfill costs and raw material prices, as well as the need for waste separation, makes the recycling of construction materials very pertinent. This not only protects the environment, but also helps building contractors to save costs.

Rockster mobile crushers guarantee profitable recycling of

asphalt, concrete and demolition debris as well as processing of natural stone. The compact mobile track-mounted impact crusher R900 offers best mobility and high ease of use because of numerous technological refinements. Versatile setting options ensure excellent final grain quality and increased usability.

R900 IS THE MOST COMPACT SOLUTION FOR RECYCLING AND CRUSHING OF:

CONCRETE



Recycled concrete blocks 0/16

DEMOLITION DEBRIS



Subbase road 0/32

ASPHALT



Road 0/32

BRICK



Refilling pipelines 0/64

VIRGIN STONE



Forest road 0/32

MAIN DIMENSIONS

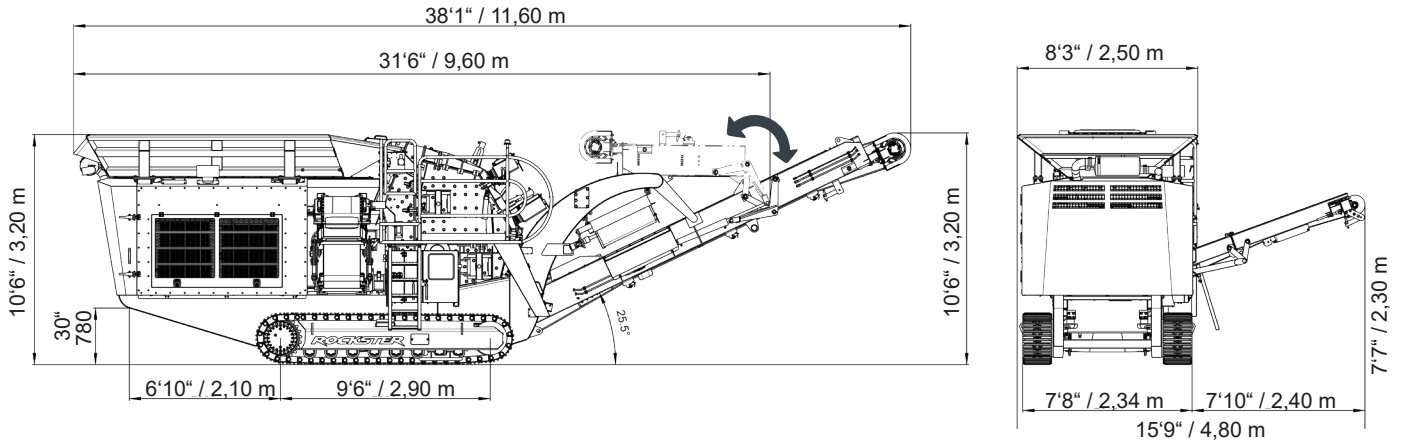
R900

Transport dimensions

| | |
|-------------------|---------------------|
| Length: | 31'6" / 9,60 m |
| Width: | 8'3" / 2,50 m |
| Height: | 10'6" / 3,20 m |
| Transport weight: | 56.300 lbs / 25,5 t |

Feeding & discharge height

| | |
|----------------------|------------------|
| Feeding height: | 10'6" / 3,20 m |
| Main discharge belt: | ~ 10'6" / 3,20 m |
| Side discharge belt: | ~ 7'7" / 2,30 m |



TECHNICAL DETAILS

MAXIMUM FLEXIBILITY

The Rockster impact crusher guarantees highest performance at a very high crushing ratio. Due to two hydraulically adjustable swing-beams, as well as the rotor speed variation, the final grain can be optimally defined. High quality blow bars can be used bilaterally too and are

chosen individually depending on the application. The blow bar exchange is possible through a built-on blow bar exchange device, therefore an external lifting device is not necessary. High quality wear materials ensure reduced wear.

Impact crusher

| | |
|--|-------------------------------|
| Inlet opening: | 36" x 29" / 900 x 720 mm |
| Impact circle diameter: | 41" / 1020 mm |
| Rotor equipment: | 4 hammers |
| Crushing ration: | 1:10 - 1:50 |
| Performance: | up to 270 st/h / 240 t/h |
| Rotor speed (continuously adjustable): | up to 850 rpm |
| Weight: | 16,645 lbs / 7.550 kg |
| Drive: | hydrostatic |
| Gap adjustment (adjusted on display): | fully hydraulic |
| Dust suppression: | At the crusher inlet & outlet |



Drive

| | |
|------------------------------------|---------------------------------------|
| Engine (electronically regulated): | Volvo Tier 3a - 200 kW / ~268 HP |
| | Volvo Tier 4 Final - 210 kW / ~282 HP |
| | Volvo STAGE V - 210 kW / ~282 HP |
| Cylinder: | 6 |
| Cooling system: | water |

The drive system is located at the rear of the machine, enclosed in a sound-proofed housing. Engine openings are positioned on all sides for easy access, service and overall maintenance.

The hydraulic pump for all auxiliary drives (main discharge belt, side discharge belt, vibration chute, crawler gear...) as well as the pump for the hydrostat are driven via a distributing gear unit which is flange-mounted on the drive engine. The hydrostat activates the crusher via a V-belt drive.



ADVANTAGES OF THE HYDROSTATIC DRIVE

- > Elimination of conventional clutch. No wear.
- > Individual adjustment of crusher speed
- > Crusher overload protection
- > Power adjustment according to individual requirements
- > Uniform throughput
- > Enormous power reserves
- > Adjustment of rotating direction (Duplex)

Feed hopper

| | |
|-----------|--|
| Material: | Hardox 400 |
| Volume: | 5.3 yd ³ / 4,0 m ³ |
| Length: | 12'6" / 3800 mm |
| Width: | 8'2" / 2500 mm |
| Height: | 10'6" / 3200 mm |



Vibration chute with pre-screening

| | |
|-----------|-------------------------------------|
| Material: | Hardox 450 |
| Length: | 47" / 1200 mm |
| Width: | 36" / 900 mm |
| Type: | Zig zag |
| Option: | bar screen |
| Drive: | hydraulic - continuously adjustable |



Bypass

The switchable chute (Bypass) enables the discharge of pre-screened material on the side or onto the main discharge belt.

Easy switch via hand lever.

No special assembly necessary.

No wear. No service.



Main discharge belt

| | |
|-------------------|----------------------------------|
| Belt width: | 40" / 1000 mm |
| Discharge height: | ~ 10'6" / 3,20 m |
| Angle: | 26° |
| Drive: | hydraulic, continuously variable |

The main discharge belt is hydraulically foldable for transport purposes.



Side discharge belt

| | |
|-------------------|-----------------|
| Belt width: | 20" / 500 mm |
| Discharge height: | ~ 7'6" / 2,30 m |
| Angle: | 20° |
| Drive: | hydraulic |

The side discharge belt is hydraulically foldable for transport purposes.



Magnetic separator

| | |
|-------------|--------------------|
| Type: | Permanent magnet |
| Belt width: | 30" / 750 mm |
| Weight: | 2645 lbs / 1200 kg |
| Drive: | hydraulic |



Caterpillar crawler

| | |
|--------------|------------------------|
| Tread width: | 16" / 400 mm - slanted |
| Wheel base: | 9'6" / 2900 mm |
| Surface: | triple ribbed pads |
| Drive: | 2-speed hydraulic |



Control panel

Central control/operating unit ensures an easy operation and machine monitoring in connection with a wireless remote control.

Fully automatic engine Start-Stop system with only one button.

- > Save the operation settings for various applications
- > Error monitoring - error log
- > Input & output status
- > Fast start of operation (QUICKSTART-Function)



FEATURES

R900

Environmentally friendly

Reduction of emissions through:

- > efficient dust suppression
- > sound-proofed housing
- > motor drive according to the latest technology standards



Easy maintenance & ideal accessibility

Large covers enable optimal accessibility when it comes to service and maintenance. Furthermore they ensure optimal ventilation of the drive-unit and the cooler.



OPTIONS



Water pump



Blow-bar exchange system



Main belt - wear protection



Air compressor



Sound protection cover



Belt scale
incl. printer

OPTIONEN

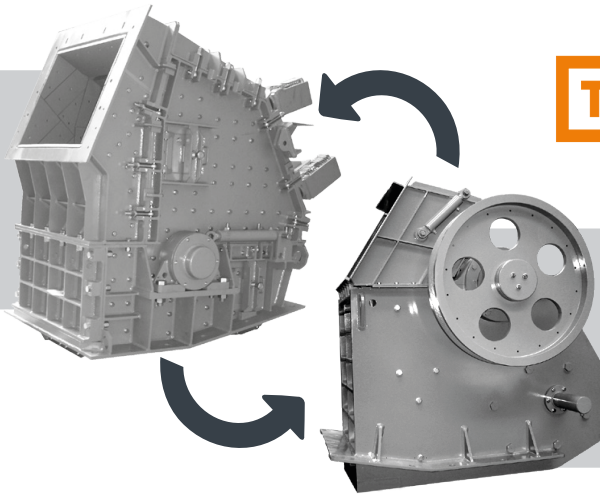
R900

DUPLEX SYSTEM

The unique design of the ROCKSTER crusher allows the transformation from a jaw crusher to an impact crusher and vice versa in only a few hours. Achieve maximum machine utilization by using one carrier and different crusher units to rapidly adapt to different job requirements.



R900
Impact crusher



THE ORIGINAL
since 2004

R800
Jaw crusher

AIR BLOWER - for cleaner and higher quality final product

RVB1700

The Rockster Air blower RVB1700 is used to efficiently separate non-aggregates from the final end-material, which results in a cleaner and higher quality final product. This enables Rockster customers to work more environmentally friendly and economically.



Technical details

| | |
|------------------------|--|
| Air volume: | up to 1.700 m ³ /h / 2,223 yd ³ /h |
| Differential pressure: | up to 7.000 Pa |
| Drive power: | up to approx. 15 kW / 20 hp |
| Drive - rpm: | up to 3.200 min ⁻¹ |
| Weight: | approx. 150 kg / 330 lbs |



VIDEO



OPTION: SCREENING SYSTEM SCREEN BOX RS83 + RETURN BELT RB75

R900

Defined final product in one workflow

The optional screening system consists of the compact circular vibrating screen RS83 in combination with the return belt RB75. The screening system is a perfect addition for the production of 100 % defined final grain.

The components are mounted directly onto the main discharge belt and are driven through the additional hydraulic system of the crusher.



Vibrating screen

| | |
|----------------|--------------------------|
| Screen size: | 6' x 4' / 1830 x 1200 mm |
| Standard mesh: | 1 1/2" / 38 mm |

Special screens available on demand



Discharge conveyor - fines

| | |
|-------------------|------------------|
| Belt width: | 32" / 800 mm |
| Discharge height: | ~ 10'5" / 3,20 m |



Discharge conveyor - oversize grain

| | |
|-------------|--------------|
| Belt width: | 20" / 500 mm |
|-------------|--------------|

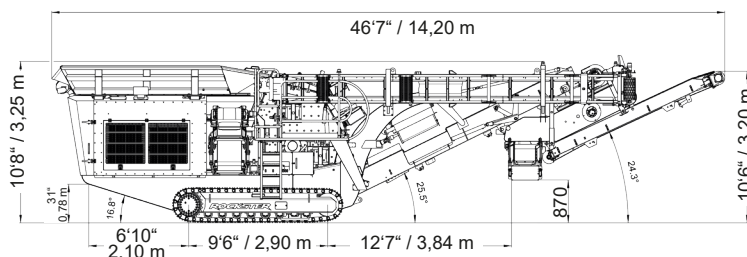


RB75 return belt

| | |
|-------------|--------------|
| Belt width: | 16" / 400 mm |
|-------------|--------------|

Transport dimensions R900 + RS83 + RB75

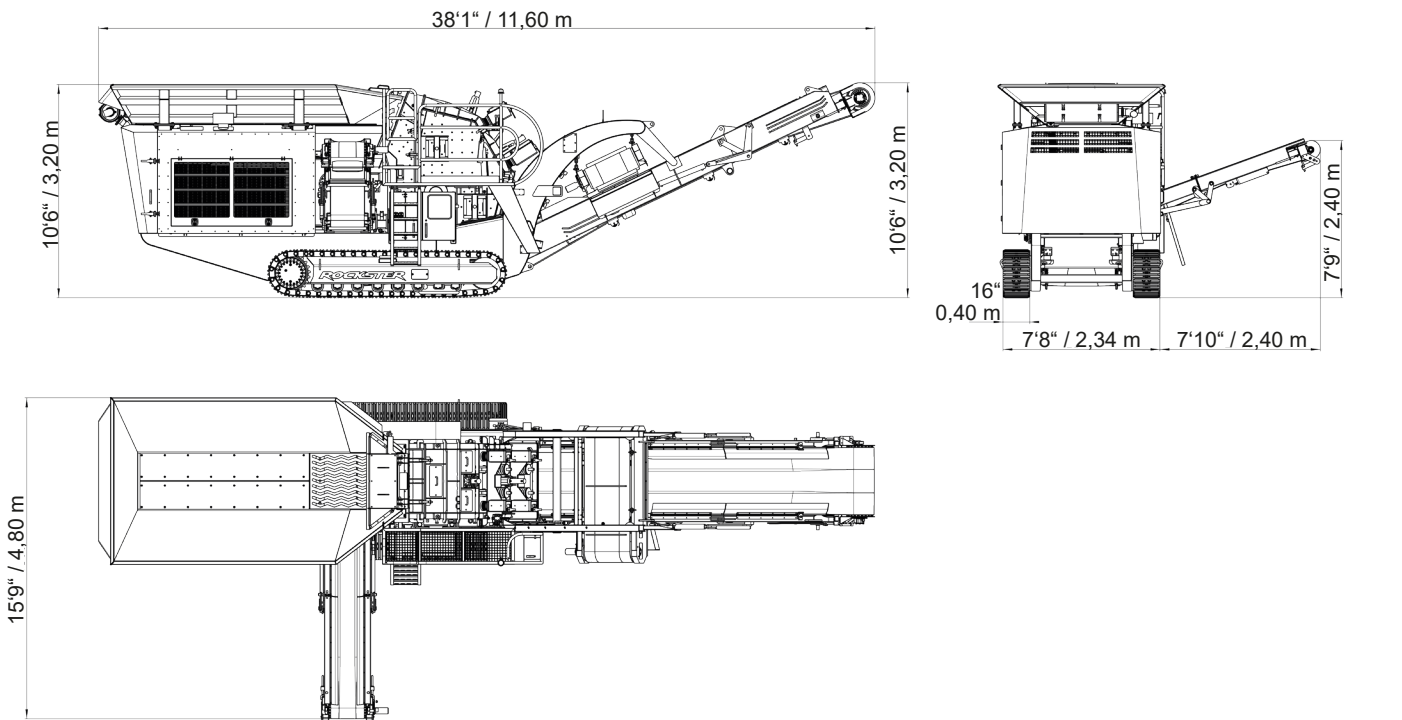
| | | | |
|---------|-----------------|---------|----------------------|
| Length: | 46'7" / 14,20 m | Width: | 8'3" / 2,50 m |
| Height: | 10'8" / 3,25 m | Weight: | 63,100 lbs / 28,60 t |



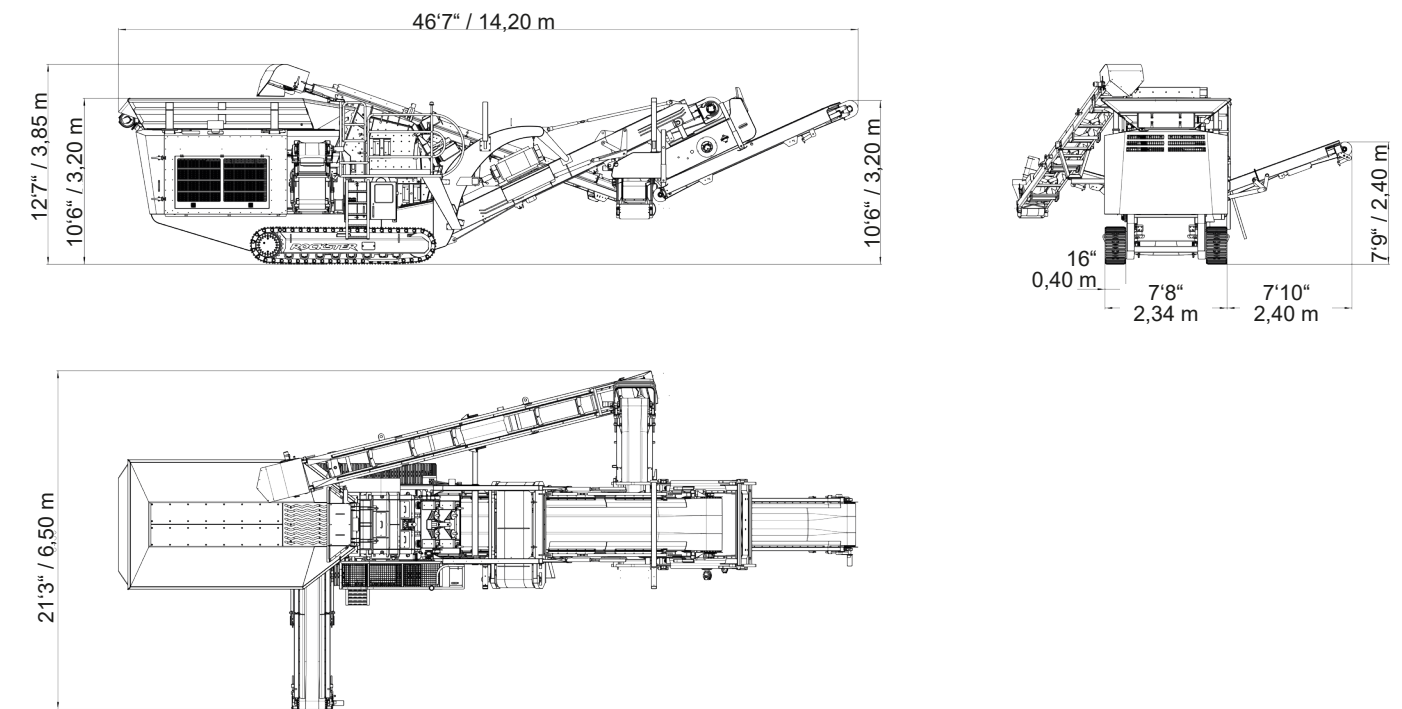
WORKING DIMENSIONS

R900

R900



R900 with screening system





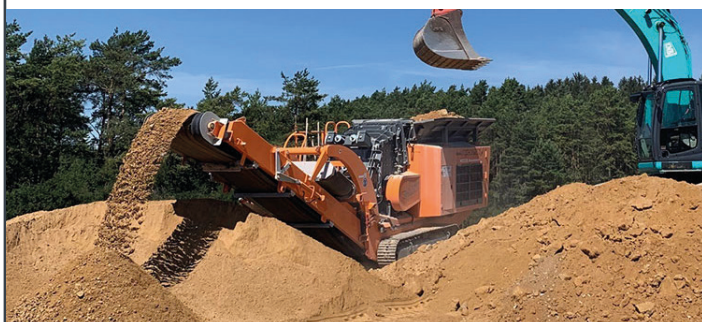
„The main argument for another Rockster impact crusher was the unbeatable output. I also tested equipment from other manufacturers, but in case of crushing performance this machine is one step ahead of the others. In relation to the specific jobs, Rockster offers countless settings where the parameters can be adjusted to get the most out of the impactor. Once these settings have been saved, the operation is very simple: Turn the key – get on the excavator – press the Start-button twice and get started.“

Holger Kopitz, Founder and CEO
BB Bauschutt Brecher GmbH, Austria



“This is perhaps one of the biggest reasons why we chose to stay with Rockster and how we have built such a strong relationship. Every question or any problem that we might have had, has been solved in no time. Vojo (Rockster Service Technician) has been servicing and maintaining the machine regularly, so we did not have any problems.“

Lazar Zeković, CEO
Zeković Company Doo, Montenegro



„By purchasing our own mobile crusher, we are now not only able to immediately recycle construction materials from our construction sites, but we can also increase our revenue from renting our mobile crusher.“

Martin Meier, CEO
Martin Meier Erdbau, Germany



SCAN & READ



SCAN & READ

GENERAL INFORMATION



| | | | | | | |
|--|---------------------------|--------------------------|----------------------------|--------------------------|------------------------------|-------------------------|
| | | | | | | |
| HIGH & CONSTANT PERFORMANCE | INCREASED MOBILITY | EASE OF OPERATION | MAXIMUM FLEXIBILITY | HYDROSTATIC DRIVE | LONG-TERM RELIABILITY | CLIMATE FRIENDLY |

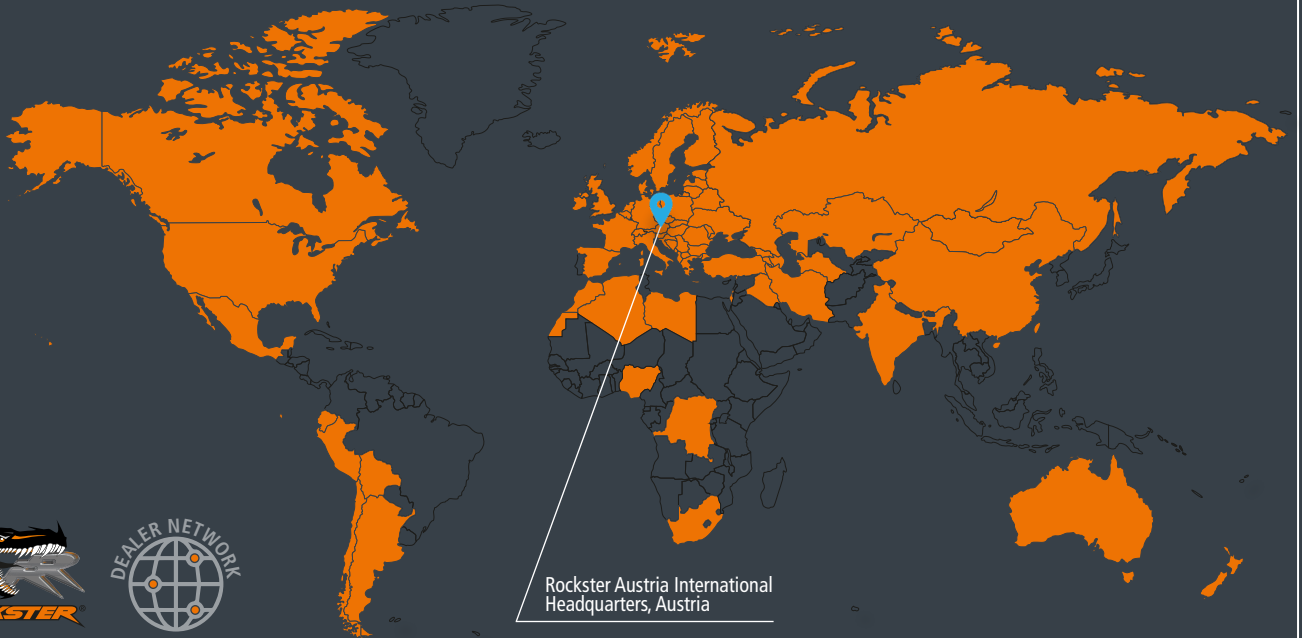
Austrian based manufacturer Rockster Austria International GmbH has a longlasting reputation and the know-how in demolition and screening industry.

The product line includes, among others, track mounted impact and jaw crushers, screening machinery and tracked stackers. "Our mobile crushers and screeners are used for profitable & economical recycling and processing of asphalt, concrete and construction waste, as well as for natural stone.

With innovations like The Original DUPLEX system or double-functional return belt, we repeatedly demonstrate our progressive approach towards improving and developing more efficient recycling & processing methods."

Rockster machines are sold in more than 50 countries worldwide. Our sales partner network guarantees the ideal on-site package of product and service in order to support and secure the daily success of our customers.





Rockster Austria International
Headquarters, Austria

SOLD IN MORE THAN 50 COUNTRIES WORLDWIDE

**EFFICIENT
CRUSHING TECHNOLOGIE**

Rockster Austria International GmbH | Matzelsdorf 72, 4212 Neumarkt i.M., Austria
Tel.: +43 720 70 1212 | office@rockster.at | www.rockster.at

